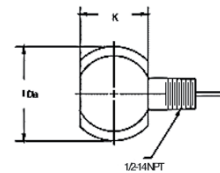
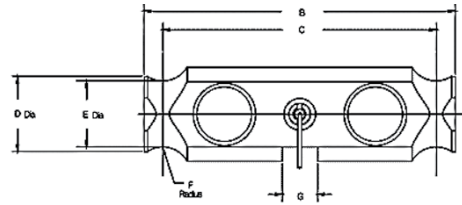



RLDB5000S Double-Ended Beam, Stainless Steel, NTEP 1:10000 IILL Multiple Cell, Welded-seal, IP67



Picture is a representation of actual product



SPECIFICATIONS

<p>Full Scale Output: 2±0.1% mV/V</p> <p>Output Resistance: 686-714 ohms</p> <p>Input Resistance: 699-707 ohms</p> <p>Material/Finish: Stainless steel</p> <p>Temperature: Compensation Range 14°F-104°F/-10°C-40°C</p>	<p>Safe Overload: 150% Full Scale</p> <p>Safe Sideload: 100% Full Scale</p> <p>Rated Excitation: 10V DC (15V DC maximum)</p> <p>Non-repeatability: 0.01% Full Scale</p> <p>Combined Error: 0.03% Full Scale</p>	<p>Insulation Resistance: 5000 megohms</p> <p>Deflection at Capacity: 0.01 in/0.38 mm</p> <p>Seal Type: Environmentally sealed, NEMA 6P/IP67</p> <p>Cable Length: 35 ft/10.6 m</p> <p>Cable Diameter: .305 polyurethane jacket</p>	<p>Cable Color Code: Red + Excitation Black - Excitation White - Signal Green + Signal</p> <p>Warranty: Two-year limited warranty</p> <p>Approvals: </p>
--	--	---	---

DIMENSIONS

RATED CAPACITY	B	C	D	E	F	G	K	I
lb/inches								
50,000 lb	8.25	7.25	2.0	1.76	0.75	0.93	1.8	2.5
kg/mm								
22,679.6	209.55	184.15	50.8	44.7	19	23.6	45.72	63.50

ORDER INFORMATION

LOAD RATING	PART #	PRICE
50,000 lb (22,679.6 kg)	91765	Consult

INTERCHANGEABLE PRODUCTS

MANUFACTURER	MODEL
Cardinal®	DB5000S

RICE LAKE WEIGHING SYSTEMS